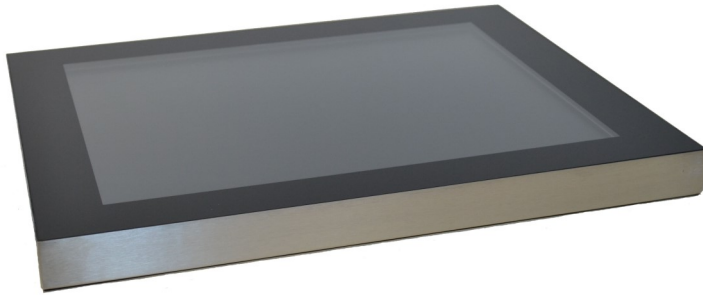


# APEX | 17" Waterproof Touchscreen Display



- ◆ 17" Waterproof Touchscreen Display  
Fully IP65 sealed for Indoor and Outdoor use  
Optional High Bright Sun-Readable Display.
- ◆ 1280 x 1024 Resolution, 4:3 ratio
- ◆ Rear VESA studs for desk stand / wall bracket.
- ◆ Full black-border Projected Capacitive Touchscreen, 3M Capacitive or 5-wire Resistive.
- ◆ Standard AC or optional 12, 24, & 48 vDC operation.
- ◆ Black or Stainless Steel finish, bespoke options.
- ◆ Designed, hand assembled and fully supported by Nemacom in the UK.

The Nemacom APEX range of robust, fully IP65 sealed waterproof Touchscreen Displays are designed for Indoor Harsh Environment and Outdoor applications.

Offering full protection against water and dust ingress, the APEX Display is manufactured by Nemacom in the UK for optimum reliability and performance in the most challenging of environments. Compact, hardwearing and with a choice of Touchscreen Technologies, our APEX Waterproof Displays are the ideal solution for a wide range of applications, including:-

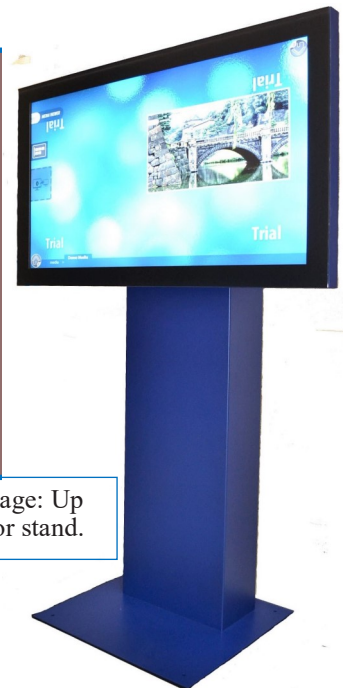
Automation | Food Process | Wayfinding | Key Performance Indicator | Manufacturing | Process Control  
Advertising | Outdoor Digital Signage.



Available in Black or Stainless Steel.  
Rear VESA Studs for Wall Bracket / Desk  
Stand mounting.



Waterproof Digital Signage: Up  
to 55" with bespoke floor stand.



Tel : +44 (0)1543 495020  
Email: [sales@nemacom.co.uk](mailto:sales@nemacom.co.uk)

Nemacom Ltd, Unit 6 Morgans Business Park,  
Betty's Lane, Norton Canes, Staffordshire, WS11 9UU.



# APEX | 17" Waterproof Touchscreen Display



<b>Specification.</b>	
<b>LCD:</b>	17"   1280 x 1024 resolution, LED Backlights. Display Area: H338 x V270mm, 4:3 ratio, Viewing Angle: H:178deg V:178deg, Brightness: 350 cd/m2, Contrast: 800:1, Colours: 16.7 million
<b>Signal Input:</b>	<b>VGA</b> via fixed 2mtr cable, terminating in standard VGA <b>Optional:</b> Composite video input.
<b>OSD:</b>	User control buttons on the rear.
<b>Touchscreen Options:</b>	5-wire Resistive : Hardness 3 Mohs 3M Surface Capacitive : Hardness 7 Mohs Projected Capacitive, full black border : Hardness 7 Mohs USB or Serial Interface options
<b>Non-Touchscreen:</b>	Anti-Glare Protective Cover fitted as standard, IP65 sealed Options: Toughened / Laminated Glass
<b>Power Supply:</b>	100~240vAC External PSU (not IP rated) with 1.8mtr power cord. Optional: 12v, 24v & 48vDC Optional: IP65 rated external Power Supply
<b>Operating Temperature:</b>	0 ~ 50°C
<b>Housing:</b>	Fully IP65 Sealed with waterproof input connectors / fixed leads. Mild Steel: Black or bespoke paint colour* MOQ may apply. Brushed Stainless Steel, Polished Stainless Steel.
<b>Mounting:</b>	Rear VESA studs For mounting Brackets and Desk Stand ideas, please visit.- <a href="https://www.ergomounts.co.uk/">https://www.ergomounts.co.uk/</a> Nemacom are a UK reseller for Ergomounts products.
<b>Sun Readable LCD:</b>	Optional High Bright Display for Outdoor use. *Size restrictions may apply.
<b>Approvals:</b>	CE
<b>Warranty:</b>	2 years, return to Nemacom, full UK support.
<b>Weights &amp; Dimensions:</b>	Contact us.
<b>Applications:</b>	Automation   Food Process   Manufacturing   Process Control   Advertising Outdoor Digital Signage   KPI   Wayfinding.
<b>PC Options:</b>	The APEX Waterproof Display range is also available with a fully integrated PC, <a href="#">view our APEX-PC range here.</a> <b>Embedded Box PC</b> <a href="#">View our range of Arestech Embedded Box PC's here</a>
<b>AV Accessories:</b>	Nemacom are an authorised reseller of high quality <b>Kramer</b> products, including Computer Graphics Video Distribution Amplifiers, Video Switchers, Routers and Cables. <a href="#">View Kramer Products.</a>

Tel : +44 (0)1543 495020  
Email: [sales@nemacom.co.uk](mailto:sales@nemacom.co.uk)

Nemacom Ltd, Unit 6 Morgans Business Park,  
Betty's Lane, Norton Canes, Staffordshire, WS11 9UU.

